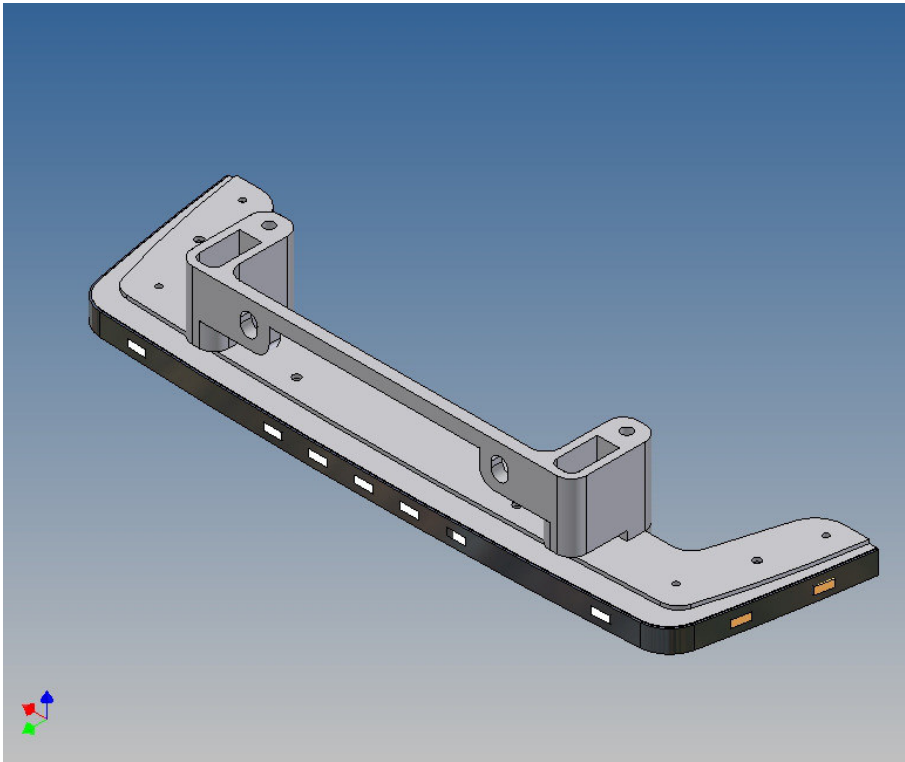


## Assembly Instruction

### Low Bar assembly kit for TAMIYA Scania R470/R620 (1:14,5) - Tamiya Front -

**Best.-Nr.: 2017-9861-R**



**Version 1.0 – 13.05.2017**

## General Description

This part set is designed for the TAMIYA Scania R470 (2-axle) or R620 (3-axle) 1:14 with original Tamiya Front.

For better optics, a cover strip is available (polystyrene or polycarbonate) which can be applied and varnished from the outside to the LED chain.

This cover strip is screwed or glued at its own discretion.

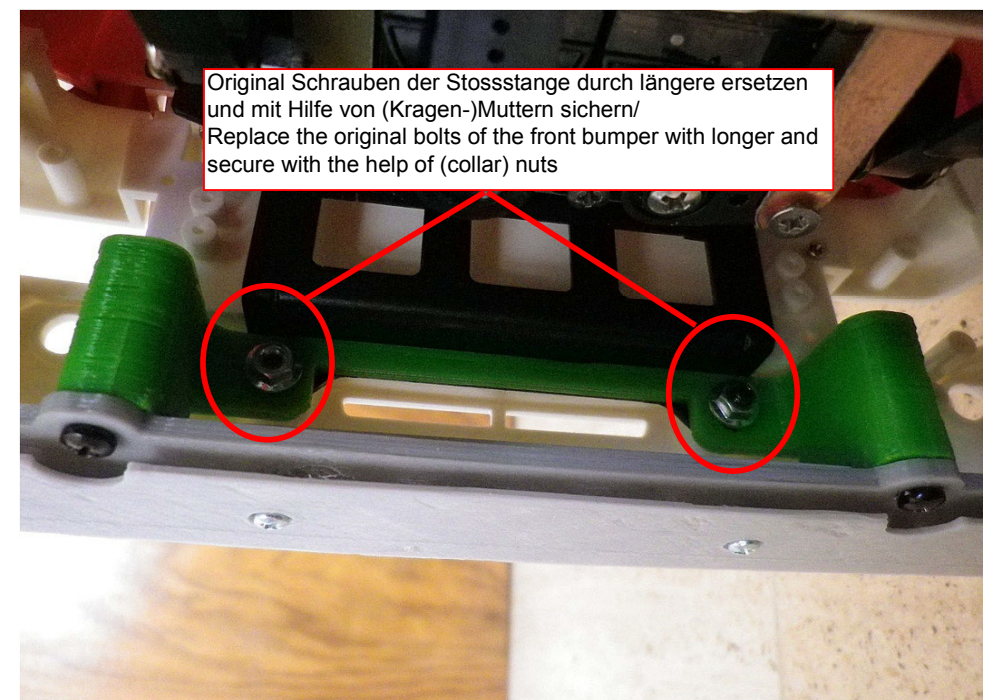
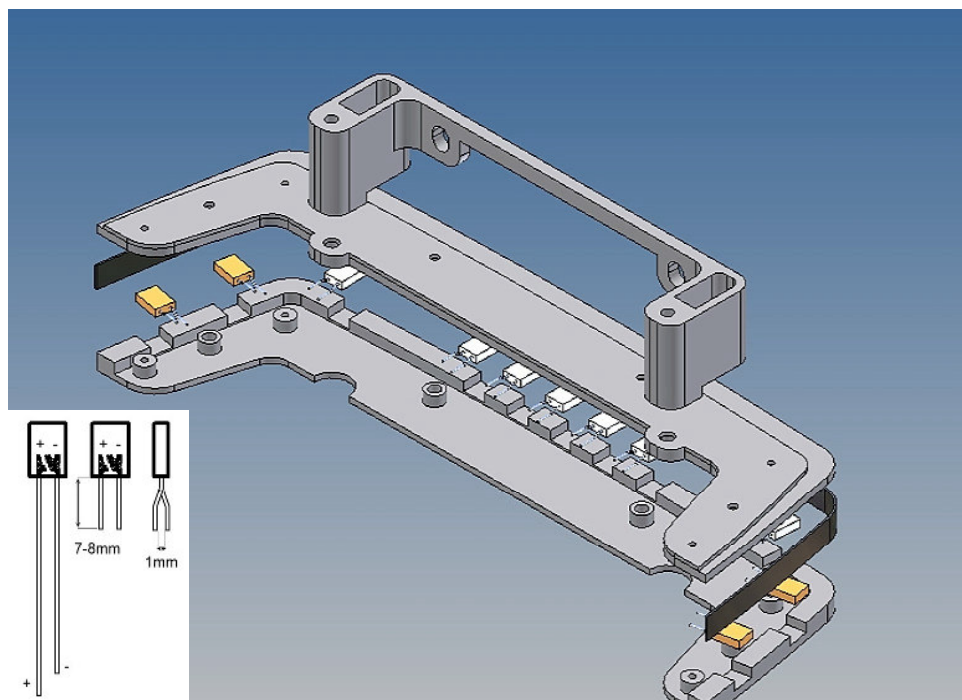
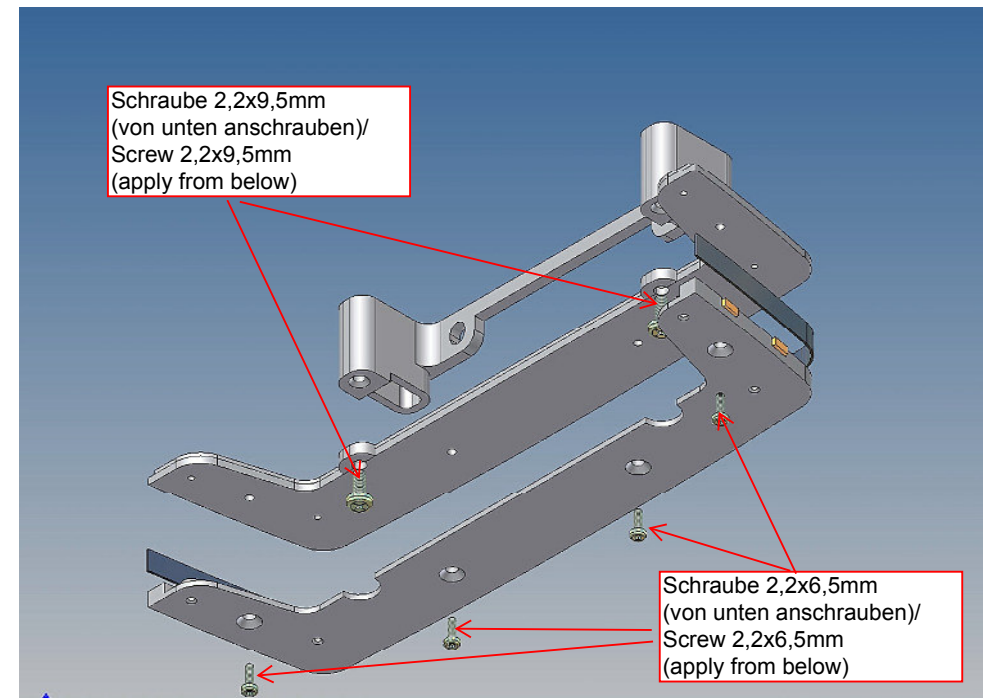
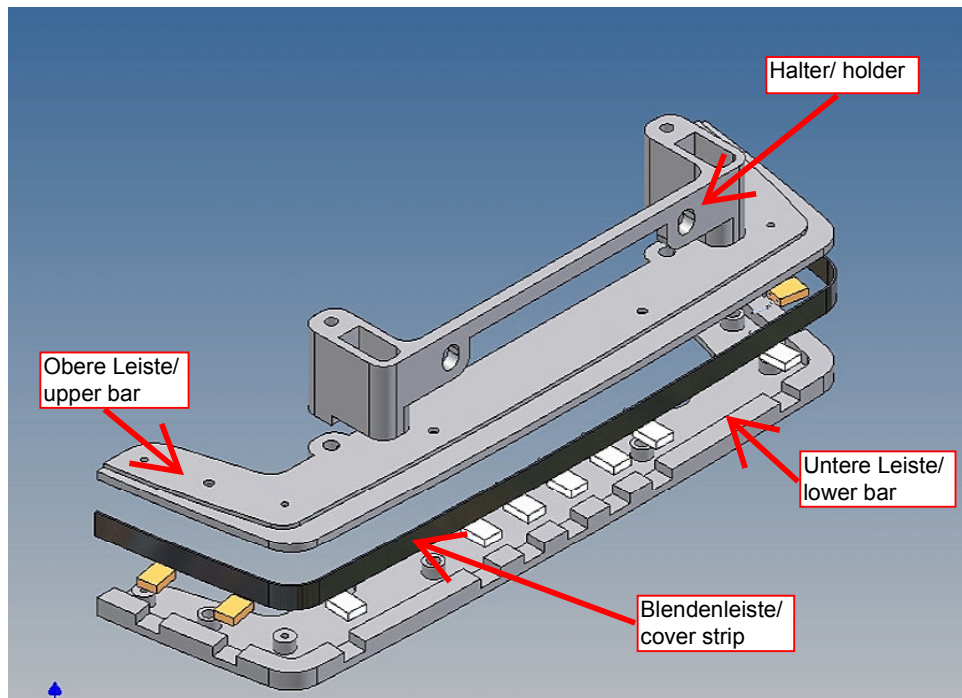
## Assembly Procedure

Before assembling, please familiarize yourself with the parting sequence, position and accuracy of the parts.

The PLA parts may have to be slightly reworked and the LEDs glued and wired.

The four-part low-bar consists essentially of PLA parts and is fixed in the vehicle below, behind the front via the enclosed holder.

The PLA combos are assembled from below with the enclosed self-tapping screws.



**Annotation:**

Good luck and have fun - your MDTechShop team

[www.MDTechShop.de](http://www.MDTechShop.de)

For questions or replacement part requests please send a short e-mail.

**Warning:**

**This is not a toy! It contains small parts! Keep it away from young children!**